



## **Being Called to Walk**

*Clerk's Message By Peggy Daub, Clerk*

*He has told you, O man, what is good, and what does the LORD require of you but to do justice, and to love kindness, and to walk humbly with your God?*

Micah 6:8 (English Standard Version)

*On October 14, 2011, I walked out the backdoor of my home in Chadds Ford, PA and began a cross-country search for the most basic human interface of them all: stories. Every one of us has an extraordinary story worth hearing, and I'm walking the country to listen. ... Life is fast, and I've found it's easy to confuse the miraculous for the mundane, so I'm slowing down, way down, in order to give my full presence to the extraordinary that infuses each moment and resides in every one of us.*

Andrew Forsthoefel, "Walking to Listen", 2011

Some weeks ago, in meeting for worship, I was mindful of having just shared what I hoped were words of encouragement with a friend facing a very challenging series of cancer treatments. I had recalled the Bible verse that appears above that says we are called to "walk humbly with our God." You just have to keep going, one step at a time, I told her, and you will get through this. It's only one step at a time that we are called to do.

During worship, the fuller power of this Bible verse came to me. Of all the wonderful parts of it, including doing justice and loving

kindness and being humble, it was the call to walk with God that hit me in the heart. I suddenly knew there was a reason that verse didn't say that we should sit with God or stand

with God, though both of those definitely have their places in our lives too. I saw that I have no chance of answering motions of the Spirit if I am sitting or standing and am not ready and willing to move. God calls us to change - to change ourselves, to change

the world, to change the direction we're going, or to move faster or slower along the path we're on. But

*(Clerk's Message continued on next page)*



### **Inside this issue:**

- *Clerk's Message, pp. 1-3*
- *Plenary Panel, p. 3*
- *LEYM 2013 Workshops, p. 4*
- *LEYM Registration Instructions, p. 5*
- *LEYM Registration Form, p. 6*
- *LEYM Parent Consent Form, p. 9*
- *LEYM Rep. Meeting Minutes, pp. 11-15*
- *Ministry and Nurture Report. Pp. 17-18*
- *State of Religious Education, pp. 18-19*

## Clerk's Message, continued

(Clerk's Message continued from page 1)

God calls us to keep moving, to walk, one step at a time.

The thing about openings is that sometimes they are meant just for you and sometimes they are meant to be shared. I'm not absolutely sure this one has a powerful message for everyone, but I am completely confident that it is meant for me. Basically, I can be a stick in the mud, one who is hard to get moving, too often stuck in my own inertia. This lesson that readiness to move, and in fact moving itself, are required of us by God, strikes me deeply. Now I see related lessons all around me.

For instance, STEP (Simplicity, Truth, Equality, Peace) is sometimes used among British Quakers as an acronym representing our testimonies, rather than the SPICE or SPICES more common among American Friends. It is a reminder that steps, humbly walked, are one of the things God requires of us and that it is in these small, daily "steps" of our testimonies that life is lived.

And then last Sunday afternoon on the radio I

heard the story of Andrew Forsthoefel, a young man who walked from Philadelphia to San Francisco, calling it the "Walking to Listen" project. He asked people he met along the way what advice they would give their 23-year-old selves, and from his many hours of recordings produced an hour-long radio show (available at [transom.org](http://transom.org)). He described the kinds of walking he found himself doing over the thousands of miles he traversed, including walking in joy, walking in fear, walking automatically, and walking while crying with fatigue. Sounds like life to me.

With enough steps, we can cover fifty years, and that is what Lake Erie Yearly Meeting has done. This summer when we gather we will have our usual opportunities to gather in Spirit, conduct the business of the yearly meeting, and find nurture in each other's company. But we will also pause to remember where we've been as a group over the last fifty years.

(continued on page 3)

### Lake Erie Yearly Meeting Contacts

**Presiding Clerk**

Peggy Daub  
1506 Arborview Blvd  
Ann Arbor, MI 48103  
(734) 668-8063  
[peggydaub@hotmail.com](mailto:peggydaub@hotmail.com)

**Recording Clerk**

Peter Dale  
9812 Cranston St  
Livonia, MI 48150  
(734) 427-1035  
[dalehench@ameritech.net](mailto:dalehench@ameritech.net)

**Bulletin Editor**

Thomas Burnett  
3816 Spring Valley  
Albany, Ohio 45710  
(419) 217-5378  
[LEYM.Bulletin@gmail.com](mailto:LEYM.Bulletin@gmail.com)

**Database Manager**

Mathilda Navias  
147 Hall St  
Tiffin, OH 44883  
(419) 448-0578  
[galaxy@woh.rr.com](mailto:galaxy@woh.rr.com)

**Assistant Clerk**

Sally Weaver Sommer  
118 S. Spring St.  
Bluffton, OH 45817  
(419) 358-0950  
[somerjs@bluffton.edu](mailto:somerjs@bluffton.edu)

**Treasurer**

Mike Hinshaw  
1641 Southwood Dr.  
Ashland, OH 44805  
(419) 289-7834  
[xochitl23@verizon.net](mailto:xochitl23@verizon.net)

**Webster**

Mathilda Navias  
147 Hall St  
Tiffin, OH 44883  
(419) 448-0578  
[galaxy@woh.rr.com](mailto:galaxy@woh.rr.com)

**Lake Erie Yearly Meeting**

c/o Office Manager  
Ann Arbor Friends Meeting  
1420 Hill Street  
Ann Arbor, MI 48104  
(734) 761-7435  
<http://leym.org>

### Memo: Children's Youth Committee

To Parents

The Children and Youth Committee of Lake Erie Yearly Meeting would like to ensure that each child be cared for and engaged in appropriate activities throughout the yearly meeting session. We are completely staffed by committed volunteers who have spent time and energy to provide these services. We need your cooperation to make this a wonderful experience for all.

We welcome all children. We will provide appropriate care during scheduled activities, asking that when these programs are completed you are available to supervise your child. If for some reason your child is unwilling to participate in the program provided, we ask that you supervise them. Please speak with your child's leader or the clerk of this committee to work out any details that would be helpful.

This year the high school program leaders are willing to stay later than the schedule indicates. They will be with the High school group until midnight. At that time the High School room will no longer be available and the youth will be under the care of their parents/adult sponsor.

Carla Pratt-Harrington

The yearly meeting has not been standing or sitting through those fifty years either – it has been moving along one step at a time, just as all of the individuals in it have.

As we walk together, new people arrive, and others depart. It has been a joy to serve the yearly meeting as its clerk for the past three years. I'm not going away, but I will leave my post as clerk of LEYM at the end of our annual sessions, and Sally Weaver Sommer will become the new clerk. Clerking has brought me the opportunity of looking for Spirit in our interactions, and I have often caught glimpses of the Holy working in us and among us. Thank you for letting me serve you in this way.

Peggy Daub, Presiding Clerk

**Would You Like to Work to  
Make Love Visible?  
“Workdays with Habitat for Humanity”**

Lake Erie Yearly Meeting is sponsoring workdays with Habitat for Humanity on Wednesday afternoon, July 24 and Thursday morning, July 25.

For those not involved in LEYM committee meetings, the work might continue on Thursday afternoon. A program of information about the communities where work will be done, and perhaps music and games, will follow supper on Wednesday evening.

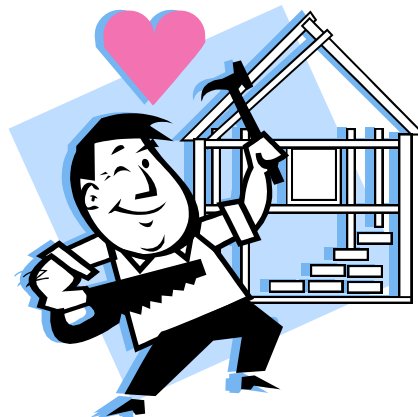
We plan to work at the Habitat for Humanity ReStore in Lima, Ohio and a Habitat house in Delphos. Children under 16 may be able to work at ReStore with a parent; we hope to have childcare for little ones. There will be small jobs and large jobs; all skill levels will be needed. Housing and meals will be arranged. Costs will be low.

Please send an early indication of interest, with names and ages listed, to Nancy Taylor, [netaylor@tds.net](mailto:netaylor@tds.net)  
324 Hilldale Drive, Ann Arbor, MI 48105  
phone: 734 995 6803

**PLENARY PANEL TO CELEBRATE OUR  
50<sup>TH</sup> ANNIVERSARY**

As part of the joyous celebration of LEYM's 50<sup>th</sup> anniversary at this year's annual sessions, we will have a panel of speakers at our plenary gathering on Friday evening, July 26: Conleth Crotser (Cleveland), John Howell (Athens), Don Nagler (Pine River), and Abbey Pratt-Harrington (Athens, now at Earlham School of Religion). These four Friends, who have experienced the yearly meeting in different ways, will share with us some stories of their journey with Lake Erie Yearly Meeting, and how they have observed the growth of grace among us.

Conleth Crotser has faithfully served in the Youth and Children's Program during annual sessions for many years, and plans to present a cross-section of her own and others' experiences in working with our children. John Howell served as Clerk of the yearly meeting in 1996-98 and will touch on the experience of finding unity while struggling to find way forward on a difficult issue. Don Nagler, who was Clerk of LEYM in 2000-2002, has thoughts to share on Yearly Meeting as a "seasoning institution" that demonstrates Quaker faith and process in practice and can have an especially strong impact on those from very small monthly meetings or worship groups. Abbey Pratt-Harrington grew up in our yearly meeting and finds herself now exploring how to integrate into the yearly meeting as an adult.



## LEYM 2013: Growing in Grace

If you haven't heard, per your requests, LEYM 2013 is offering two days of workshops this year. The offerings include a wide range of topics to pique your curiosity, inspire you to action, and nurture your spiritual growth.

Brent Bill, as representative from FGC, will be discussing the New Meetings Project, which was established to nurture new worship groups and meetings in the United States and Canada. The New Meetings Project (NMP) has been able to support Friends who feel called to help establish and nurture vibrant Quaker communities. You can join Brent for a look at what is happening, what resources have been developed, and how you can get involved in this exciting program.

Has your established Meeting encountered a situation that has challenged the sense of the community? Merry Stanford has travelled among Friends throughout North America, hearing about and experiencing the many gifts and challenges of different meetings. In a communal and worshipful setting, structured on Quaker Couple Enrichment dialogue process, Friends speak authentically and listen tenderly to each other, allowing problems to be transformed into opportunities for growth and reducing obstacles to unity. Merry will offer a session that will lift up common challenges experienced by meetings and demonstrate the worshipful use of the evolving communal dialogue programs.

Peace Committee members Carmen and Mike Kelly plan to offer a workshop: "Immigration, What would Woolman do?" They will provide an overview of US immigration policy and offer suggestions for individuals and small groups who want to reach out to a wider community of people and stand in solidarity with immigrant communities, especially those who are most at risk for harassment, detention, and family separation.

AFSC representatives Joann Neuroth, Seth Reichenbach, and John Deikes will focus on how AFSC's Midwest Office supports programs in the region (Akron, Ann Arbor, Dayton, Des Moines, Indianapolis, Minneapolis and St. Louis) that embodies AFSC's two strategic themes of demonstrating the power of non-violence to transform lives and communities affected by violence and challenging the false narrative that war, violence, and coercion are effective ways to bring about peace and justice.

Continuing with the theme of promoting peace and non-violence, Thomas Burnett will do a workshop on how he uses story-telling in the schools to avoid vio-

lence and promote peaceful resolution of situations encountered by students.

Earthcare Committee plans to have a workshop that will introduce the "Transition Town" ways of transitioning neighborhoods or small areas to energy independence and more sustainable ways of living. We will be using the book "Power From the People" as a basic resource.

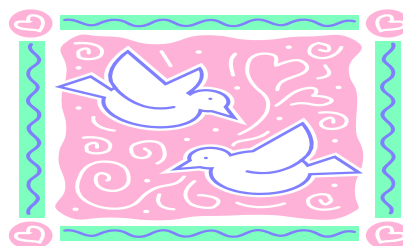
Jerry Knutson, a regular at LEYM, will be stepping in to provide a Bible Study this year in addition to providing "A Guided Meditation to Experience God's Love and Grace." In the Bible study, Jerry will focus on how Quakers read the Bible, before introducing a method for Bible study that works with answering queries, which can be found in Joanne and Larry Spears' Friendly Bible Study. True to the theme of "grace," this session will focus on queries for 2 Cor.12: 6-10. Jerry's Guided Meditation is based on the teachings of Edgar Cayce, in addition to works by George Fox, Thomas Keating, Thomas Merton, and other religious scholars.

Richard Lee, who has been doing his "workshop" for about 20 years, will be returning this year to grace us with the Meeting for Worship with Attention to Healing. Always well attended, this popular session offers a type of nurturance that speaks directly to the soul.

Want to get more from Meeting for Worship? Kate Enger is planning to offer an experiential workshop, "Centering Techniques," that will enable participants to try four techniques for letting go of stress and distractions: mindfulness meditation, progressive relaxation, guided imagery, and a simple strategy for formatting a prayer when stuck.

We have all heard that it is better to give than to receive. This is the theme that will be explored in Val Vogel's workshop: Care for the Caregiver. Participants will consider loss from a variety of perspectives as well as explore creative ways to meet changing needs defined as yours, mine, and ours.

Sound interesting? Too many choices? Well, the good news is that you get to choose 2 sessions. Of course the bad news is you only get to choose 2 sessions! See you in July!



## LEYM Annual Meeting 2013 – July 25 to July 28 – Registration Instruction

1. **Registration deadline** is Wednesday, July 10. Registration Form, Parental Consent Form, and check must be post-marked by this date for all children attending. Adults who register after this date must pay the higher \$60 registration fee. Room assignments will be made on a first come, first served basis. Early Registration fee is \$50 by July 10<sup>th</sup>.
2. Please complete a line on the registration form for each family member attending. Children age 3-18 pay 1/3 the cost of food, linens, and lodgings; registration remains free this year. All adults who work full time with the youth do not incur charges: **it is important that every person attending be listed on the registration form** so that housing assignments can be made, meals are available, and program needs can be met.
3. **Worship Group:** Put a check in the Worship Group column if you wish to participate in a worship sharing group.
4. **Adult Young Friend:** Put a check in the Adult Young Friend column if age 19-25 and wishing to participate in Adult Young Friends activities.
5. **Lodging:** Overnight attendees may stay in Ramseyer Hall, which is air conditioned, for \$22.25/night, Hirschy Hall Annex, which is not air conditioned, for \$17.25/night, or camp on the lawn near these dorms, for \$10.00/night. Prices are per person. Dorm rooms have two twin beds. Often additional beds or mattresses can be moved from an empty room to accommodate children sleeping in parents' room. Children ages 3-7 when accompanied by a parent have lodging costs of \$15.00/night at Ramseyer, \$10.00/night at Hirschy Annex, and \$5.00/night Camping. Campers need to bring their own tents and sleeping bags and will have access to dormitory restroom facilities. Put a check in the box below each night a person is staying. In the Lodging Choice column, specify Ramseyer (R), Hirschy Annex (H), or camping (C). All children and youth from 3 to 18 have lodging scholarships that reduce the subtotals of lodging and linens by 2/3.
6. **Linens:** Put a check in the Linens column if linens are desired. The \$10.00/stay cost covers top and bottom sheets, pillowcase, towel, washcloth, and small bar of soap. Alternatively, sheets and towels may be brought from home. Children and adults going to the lake will need towels for swimming. The beds in the dorms are x-long twin size.
7. **Blankets and pillows:** Blankets and pillows are not included in the linens packet. Ramseyer rooms have blankets, but not pillows. Hirschy Annex rooms have neither blankets nor pillows.
8. **Commuters:** Attendees commuting from home or staying overnight off campus pay the commuter fee for each day attending. The cost is \$4.50/day. If attending only part of a day, the full day fee for that day should be paid. Put a check in the box below each day attending.
9. **Lodging/Commuter subtotal:** For lodging: multiply the number of nights staying by the cost per night of the chosen lodging and, if linens are desired, add in the linen cost, and enter the value in the Lodging Subtotal column. For commuters: multiply the number of days commuting by the daily commuter fee and enter the value in the Lodging Subtotal Column.
10. **Meals:** Put a check in the box for each meal desired. Cost per meal for attendees ages 8 and up: breakfast \$5.85, lunch \$8.00, supper \$9.15. Add together the cost of all meals and enter in the Meals Subtotal column. Youth ages 8-18 have scholarships that will reduce these prices by 2/3. The children ages 3-7 meal rates are: breakfast \$4.20, lunch \$5.90, and dinner \$6.65. The children and youth scholarships will reduce these costs by 2/3.
11. **Registration Fee:** Adults age 19 and up pay a registration fee of \$50 if the registration form is post marked by Wednesday, July 10, or \$60 if postmarked thereafter. Part time participants must pay the full registration fee.
12. **First Time Attenders:** Those attending for the first time are entitled to a discount of 1/3 off total costs. After calculating the "Total" for each adult, calculate 1/3 of Totals for all adults who are attending for the first time and enter the value in the Scholarship field.
13. **CHILDREN:** Registrations for children and completed Parent or Guardian Consent & Permission Forms must be post-marked by Wednesday, July 10<sup>th</sup>. Children ages 3-18 pay 1/3 cost of food, lodgings, and linens. Registration for the children is free. Those participating in the Adult Young Friends program must register and pay fees as an adult. Children do not have to be toilet trained. A line on the registration form must be filled out for each child to assure a place in the Youth and Children's Program, lodging and meals. A parent or guardian should complete the LEYM Parent or Guardian Consent & Permission Form for all children ages 0-18

*(continued on page 6)*

- 14. Contact Information:** Please fill out your address, phone number, monthly meeting and email address. If an email address is specified, the registrar will notify you when your registration has been received.
- 15. Concerns/Roommates:** Please complete these sections as applicable. We will try our best to meet your requests.
- 16. Payment:** Please make checks payable to LEYM and mail along with your completed registration form, and Parent or Guardian Consent & Permission Form if children will be attending, to the registrar: Berch Carpenter, 1700 Spillan Rd, Yellow Springs, OH 45387.
- 17. Financial Assistance:** Those desiring financial assistance should first contact their monthly meetings. If needs cannot be met by the monthly meeting, contact the registrar.
- 18. Emergency Contact:** If someone needs to reach you while you are attending LEYM, during business hours, a message may be left at the Marbeck Center switchboard: 419-358-3000. After hours, campus security can be called at: 419-358-3343.
- 19. Questions?:** Please contact Berch Carpenter, registrar, at berchrc@yahoo.com or 937-408-4077

2013 REGISTRATION FORMS  
WILL BE FOUND ON  
PAGES 7 AND 9







**Deadline – July 10, 2013 – Registration Deadline for Children – July 10, 2013 – Deadline**  
**LEYM Parent or Guardian Consent & Permission Form**

All children welcome, toilet-trained or not

Child's full name: \_\_\_\_\_  
Child's age at LEYM: \_\_\_\_\_  
Child's grade level next fall: \_\_\_\_\_  
Nickname: \_\_\_\_\_ Tee Shirt Size \_\_\_\_\_ Youth Adult

Child's full name: \_\_\_\_\_  
Child's age at LEYM: \_\_\_\_\_  
Child's grade level next fall: \_\_\_\_\_  
Nickname: \_\_\_\_\_ Tee Shirt Size \_\_\_\_\_ Youth Adult

Child's full name: \_\_\_\_\_  
Child's age at LEYM: \_\_\_\_\_  
Child's grade level next fall: \_\_\_\_\_  
Nickname: \_\_\_\_\_ Tee Shirt Size \_\_\_\_\_ Youth Adult

Child's full name: \_\_\_\_\_  
Child's age at LEYM: \_\_\_\_\_  
Child's grade level next fall: \_\_\_\_\_  
Nickname: \_\_\_\_\_ Tee Shirt Size \_\_\_\_\_ Youth Adult

Home address: \_\_\_\_\_

Name(s) & address of children's Parent/Guardian/Adult Sponsor: \_\_\_\_\_

email address: \_\_\_\_\_

Please give a full listing of each child's medical, mental, and physical / conditions as well as any medications they are currently taking: \_\_\_\_\_

**Medical Insurance Information.**

Insurance Carrier: \_\_\_\_\_

Group number: \_\_\_\_\_

Policy holder's name: \_\_\_\_\_

Policy number: \_\_\_\_\_

*I am aware that my child is attending the gathering of Lake Erie Yearly Meeting at Bluffton University, Bluffton, OH, on July 25 – 28, 2013. I authorize the adult staff to arrange for emergency medical care they deem necessary. I am aware that for my child to participate in swimming, bowling, or any other off-campus activity he/she will be riding in a private motor vehicle to and from these activities. My child will only ride in vehicles equipped with seatbelts or age appropriate child-restraining devices. [Providing your child's car seat would help.]*

(Signature of parent or guardian)

Telephone number(s) where parent/guardian can be reached for permission for emergency medical treatment/admittance if they are not attending LEYM. \_\_\_\_\_

days: evenings other: \_\_\_\_\_

If parent/guardian cannot be reached, Notify: \_\_\_\_\_

Days: \_\_\_\_\_

Evenings: \_\_\_\_\_



**LAKE ERIE YEARLY MEETING  
REPRESENTATIVE MEETING  
MINUTES**

**Fourth Month 6, 2013**

**Hosted by Pittsburgh Friends Meeting, Pittsburgh, PA**

RM13-1 The Meeting opened with silent meeting for worship at 1:21 p.m. Out of the silence, the 2013 Epistle from Australia Yearly Meeting was read by Sally Weaver Sommer, Assistant Clerk. [<http://australianfriend.org/af1825>] Its themes included climate change, sustainable living, and building peace, and ended "Our challenge now is: how to continue to believe in a loving Spirit, which can guide our actions; that is, how to use intuitive knowledge and experience to balance scientific logic. We need our hearts as well as our heads."

RM13-2 Roll Call The Roll Call of Friends from constituent meetings and worship groups was made as follows, giving a total attendance of 43:

Akron 2  
Ann Arbor 6  
Athens 3  
Birmingham 1  
Broadmead 4  
Cleveland 1  
Delaware 0  
Detroit 6  
Grand Rapids 2  
Granville 1  
Holland 0  
Kalamazoo 3  
Kent 0  
Mid-Ohio Valley 0  
North Columbus 2  
Oberlin 0  
Pine River 0  
Pittsburgh 5  
Red Cedar 0  
Wooster 4  
Worship Groups 3

RM13-3 Clerk's Report

Peggy Daub (Ann Arbor) gave the following report.

*The Executive Committee met three times since the close of Annual Sessions. Once before scattering from Bluffton to introduce ourselves to each other as this year's Executive Committee and to plan a time for a fall meeting, and then again in Oberlin at the end of October and last night here in Pittsburgh .*

*One of the important things that came out of our October meeting was a decision to purchase insurance for the yearly meeting. This had become a requirement for future use of the Adrian Dominican facilities where we have held our fall Spiritual Formation retreats for the last several years. It was also noted that such insurance could prove useful in conjunction with our children, youth, and teen programs.*

*I am happy to say that we are continuing to work on the three priorities for the yearly meeting identified last year: 1) communication, 2) supporting youth activities, and 3) provision of service opportunities. You will be hearing more about these in the reports to follow at this meeting.*

*For your approval I bring forward the following names, to serve on a Naming Committee that will have responsibility for identifying people to serve on the Nominating Committee: Nancy Taylor and Seth Reichenbach.*

**The names of Nancy Taylor and Seth Reichenbach to serve as a Naming Committee for 2013 were approved.**

RM13-4 The clerk invited Sally Weaver Sommer (Broadmead) to bring forward a concern that has been laid on Broadmead Meeting. She asked if the yearly meeting were willing to make the Yearly Meeting mailing list available to Friends School in

Detroit whenever they would like to use it without the need for approval each time it is requested. The list could be used for fundraising or other appropriate purposes as the school saw the need. The rationale is that the school is under the direct care of Green Pastures Quarterly Meeting, and can be viewed as a ministry of the yearly meeting. The request did not come from the school.

During discussion it was also noted that the Yearly Meeting has historically supported Olney Friends School as well. Some concerns were raised, asking that the list be used for fundraising and the disseminating of information about the school only, and that the list not be sold. It was clarified that this involved only the postal list. It was pointed out that the list needs to be updated. The following minute was approved:

**Lake Erie Yearly Meeting will make its mailing list available on an on-going basis to Friends School in Detroit for use in direct fundraising and informational mailings.**

RM13-5 Becky Morehouse reported for the Ad Hoc Task Force on Youth (members: Becky Morehouse, Ann Arbor, Carla Pratt-Harrington, Athens, and Diane Mott, Broadmead).

The task force has been charged with building a sense of community among LEYM First Day schools and other youth volunteers. It also seeks to establish concrete means to support and encourage them in communicating with and supporting the work of each other.

In First Month, 2013, Becky and Carla attended a weekend gathering in Philadelphia on "Collaborating to Support Quaker Religious Education" with participants from Baltimore, Philadelphia, South Central, and Lake Erie yearly meetings. Although the gathering was funded by the Pickett Fund, the yearly meetings, and FGC, it was independent of those institutions.

The task force is working to determine how best to plan for a face-to-face opportunity for First Day school teachers to touch base and learn from one another. There is interest and enthusiasm for supporting a gathering around religious education as a

means of supporting and growing meetings. The Advancement & Outreach Committee expressed its willingness to support the work of this Ad Hoc committee.

#### RM13-6 The Ad Hoc Service Committee

Nancy Taylor (Ann Arbor) reported the committee has identified an opportunity to work in conjunction with Habitat For Humanity Lima (HFHL) prior to Annual Sessions this year. It appears that HFHL might have work available in either Lima or Delphos, both less than one hour away from Bluffton. HFHL is used to having groups of disparate people come in for relatively short periods and is ready to accommodate them. If details for such a work party/service project can be worked out, the Ad Hoc Service Committee will create a detailed advance announcement to let people know of this service opportunity.

#### RM13-7 Publications and Archives

Rosemary Coffey (Pittsburgh) reported.

*1) The committee sent out a notice to all monthly meetings and worship groups requesting that unneeded copies of the 2012 Annual Records be returned to the Yearly Meeting for redistribution. This request was responded to and copies of the 2012 Annual Records are now available for those who need them. 2) The committee is trying to locate several albums containing photographs of past Annual Sessions. Joe Mills located one album, but the others are still being sought. Members are asked to keep an eye out for them. Photographs from the 2012 Annual Sessions are being readied for possible display at this year's Sessions. 3) The committee suggested that another reminder with a deadline be sent out in the upcoming Spring Bulletin encouraging more participation in the Yearly Meeting oral history project. 4) The previously announced deadline of April 14<sup>th</sup> for the Spring Bulletin is unnecessarily early. It was decided that May 1<sup>st</sup> would be the new submission deadline. 5) The committee does not currently have plans to update the printed directory of the Yearly Meeting.*

The committee stressed that even without plans for a printed directory it is important to continue

getting updated information on individuals from the Yearly Meeting's constituent groups so that the database is accurate.

#### RM13-8 Advancement and Outreach Committee

Dolores Avner (Pittsburgh) reported the committee considers its most pressing challenge is to reach children and young families, laying the foundation for future growth of the Yearly Meeting. It is also paying close attention to FGC's New Meetings Project. The Shoemaker Fund has given Friends General Conference \$400,000 over two years to help it seed up to ten new meetings and worship groups. Brent Bill was hired in September by FGC to head the resulting New Meetings Project. The first significant step taken by the Project was to hold a "Consultation" at Pendle Hill last January, where 15 yearly meetings were represented. Sally Weaver Sommer and Mike Holaday (Grand Rapids) represented LEYM at this Consultation. Other LEYM members, including Connie Green (Cleveland), Marty Grundy (Cleveland) and Merry Stanford (Red Cedar) are involved in this Project as well.

#### RM13- 9 Treasurer

Treasurer Mike Hinshaw (Wooster) reported that \$27,063, or about 90% of the anticipated annual contributions from constituent meetings, had been collected so far this fiscal year. He also reported that \$23,390, or about 77% of the annual budget, had been spent. He was confident that the Yearly Meeting would operate within its budget this year. He also reviewed fund balances. Mike urged the use of forms available on the Yearly Meeting website for advances or reimbursements for expenses. Use of these forms will greatly expedite bookkeeping.

#### RM13-10 Finance Committee.

Jeff Cooper (Ann Arbor) reported for the committee, as follows.

*1. We are grateful to Susan Hartman (Ann Arbor) for completing an **audit**. The audit was more work than any of us had envisioned, including a*

*complete reconstruction of the year-end report for 2011-12 and a full reconciliation with bank statements. Susan's written report includes a list of 13 recommendations, most of which apply to how the treasurer maintains records, though a few involve policy. We have begun to implement these.*

*2. We withdrew the three Certificates of Deposit with Urban Partnership Bank, which were paying about 1% interest or slightly more, and established two accounts with Friends Fiduciary Fund, which currently has a "payout" (an effective interest rate) of 4.5%, and which has socially responsible investing. We maintained the arrangement whereby one account pays interest into the Granville Youth Fund, while the other reinvests its interest; in the transfer process, we added \$690.92 to this latter account.*

*3. We arranged for General Liability Insurance, from the Cincinnati Insurance Companies, for an annual premium of \$500. The coverage is valid for all events that LEYM sponsors and for which we pay part of the expenses. This includes youth events, Spiritual Formation retreats, consultations, Executive Committee meetings, sponsored work camps, even this Representative Meeting. We thank our treasurer, Mike Hinshaw, for finding this good rate and setting up the insurance.*

*4. The committee is working on revising the LEYM Financial Manual. It is intended to reflect current policy (rather than create new policy), but we expect to bring a couple of small policy questions to Annual Sessions.*

*5. Draft budget for 2013-14. [Copies of the draft budget were distributed to those present.] Returning to prescribed practice, we are presenting a draft budget at Representative Meeting. We note those budget lines where we are proposing different figures from last year. We have tried our best to keep the budget lean, reflecting recent spending patterns. We have added a line for liability insur-*

ance (\$500). We propose increasing the budget line for the High School Teen Retreat Program from \$4900 to \$6000; this includes an increase in the stipend – last increased eight years ago – by \$100 per retreat (\$1100 increasing to \$1200) and propose increasing the balance of this line from \$500 to \$1200, to include the costs of the Retreat Coordinator's travel. We propose decreasing the Travel budget line by \$1000 (\$6000 down to \$5000). With these and other smaller adjustments, the total expenses are \$30,240, down from \$30,450 in the current year.

We note too that membership is decreasing, and for this draft budget we have used the figure 725, down from 750 in the current year. The total expenses divided by 725 members rounds up to \$42 per member, up from \$40 currently.

Comments are welcome before Annual Sessions, when we will need to approve a budget.

**(The draft budget can be found on page 16).**

6. *Covering the cost of Annual Meeting.* The Annual Meeting is intended to be self-supporting (thus is not part of the budget), and an Annual Meeting Fund provides a cushion. Four years ago, this fund had what seemed a needlessly large cushion of over \$6000, and we decided in 2009 to offer a 1/3 discount to first-time attenders and in 2010 to cover all Annual Meeting costs for youth and children. Four Annual Meetings later, this cushion has dwindled to \$371. Last year the expenses were somewhat greater because of the costs of the “extra” teens that attended the Teen Retreat Program held at Annual Meeting, but we also for the first time invited contributions to support the costs of the youth and children attending, and received some \$1100. We believe that both the first-time attendee discounts and the children/youth scholarships are greatly beneficial to the Yearly Meeting, but we now must find a way to break even on the Annual Meeting.

To this end, we propose increasing the registra-

tion cost by \$5 (\$50 for early bird, \$60 for later registration) and decreasing the scholarships for youth and children, so that they would be charged 1/3 of the costs for meals and lodging. (Registration for youth and children remains free.) The 1/3 discount for first-time attenders will remain in place. Finance Committee is authorized to make the final decision on these costs and discounts, but we seek the discernment of Friends gathered at Representative Meeting.

We are immensely grateful for the Annual Meeting contributions last year, and ask that a contributions line again be included on the registration form this year.

The report was accepted. It was noted that monthly meetings should be notified of the new policy so they can properly support their members attending Annual Meeting as well as other Yearly Meeting events for children and youth. The meeting supported the principles the committee followed in setting fees and assistance for this coming year's Annual Meeting.

RM13-11 Nominating Committee

Thomas Taylor (Ann Arbor) reported for the committee.

**The committee brought forward for approval the appointment of Rick Todd (Kalamazoo) to the Earthcare Committee and of Flo Friender (Kalamazoo) to the Ministry and Nurture Committee. These appointments were approved.**

Thomas reported that the committee is also seeking to fill positions on the Advancement & Outreach, Earthcare, Ministry & Nurture, Publications & Archives, Adult Program, and the High School Youth Program committees. It is also seeking representatives to FWCC and FGC. In subsequent discussion, it was noted that an assistant teacher is needed for this summer's annual sessions, with both the Nominating and Youth & Children's Program Committees working on this need.

RM13-12 Ministry & Nurture

Paula Deming (Columbus) reported that the Spiritual Formation Group had its regular fall re-

treat last September and will meet again on May 4th in Livonia, Michigan, for the Spring retreat. The theme of the 2013-14 Spiritual Formation Program is "Nurturing our Spiritual Life through the Practice of a Spiritual Discipline." Della Stanley-Green will lead. The dates of the retreat are September 6-8 and it will once again be held at the Weber Retreat Center in Adrian, Michigan.

Paula reported that eight monthly meetings responded to this year's query. The committee generated a consolidated response from the eight responses. This was read and accepted.

#### RM13-13 Peace Committee

Nancy Taylor (Ann Arbor) reported the committee is offering a workshop on immigration led by Mike & Carmen Kelly (Detroit) at the Annual Sessions. The committee would like to know of particular concerns and projects about peace and conflict undertaken by Monthly Meetings and Worship Groups.

#### RM13-14 Youth and Adult Program committees

Carla Pratt-Harrington (Athens) reported for the Youth & Children Program Committee that additional leaders for the high school program during the Annual Sessions are needed. Individuals who are not parents of the attending children would be especially welcomed. The committee is clarifying responsibility during Annual Sessions for high school students both when they are with and without teachers. Parents will be notified of these expectations. Steve Deasy (Ann Arbor) and Thomas Burnett (Athens), who will present songs and stories on Saturday night, will also work with the children.

Peggy Daub (Ann Arbor) reported on behalf of the Adult Program Committee. The early morning hour that has been used for Bible Study in recent annual sessions will be used for Meeting for Worship this year. Bible study will be offered as a workshop instead. The committee is developing two afternoons of workshops, with five or six workshops being offered on both Friday and Saturday. The Annual Sessions Registration Form will ask for interest in workshops, so that proper-sized rooms

can be prepared. In keeping with this year's theme for the Annual Sessions, the committee has planned a Friday-night panel presentation by four people who have experienced the yearly meeting in different ways. Conleth Crotser (Cleveland), John Howell (Athens), Don Nagler (Pine River), and Abbey Pratt-Harrington (Athens) will comprise the panel. The committee will remind people of the Oral History Project to interview people before Annual Sessions. A simple meal will be offered on Thursday evening of the Annual Sessions, with those interested to sign up for it on the registration form.

#### RM13-15 Arrangements & Site Committee

Jon Sommer (Broadmead) reported that this year's Annual Sessions will be held at Bluffton University July 25-28. In 2014 they will be held at Bluffton University July 24-27.

#### RM13-16 Committees not meeting here

In response to queries from the floor, the following news of committees who did not meet at this Representative Meeting was shared. The Earthcare Committee has been meeting and plans a workshop at the Annual Sessions. The High School Teen Retreat Program Coordinator Robb Yurisko has planned four retreats this year, of which two have taken place thus far.

RM13-17 Thanks were expressed to our hosts, Pittsburgh Monthly Meeting, for their welcoming hospitality.

Respectfully submitted,

Peter Dale (Detroit), Recording Clerk



## Draft Budget for 2013-14

The draft budget printed below was presented at Representative Meeting after consultation with Meeting officers, committee clerks, and others. LEYM will need to approve a budget at Annual Sessions. Comments before Annual Sessions are welcome; please send them to Jeff Cooper, clerk of the Finance Committee, at [cooperdaub@hotmail.com](mailto:cooperdaub@hotmail.com) or 1506 Arborview Blvd, Ann Arbor, MI 48103.

<b>General Fund Expenses</b> <b>* subsidizes a fund</b>	<b>Budget 12-13</b>	<b>Actual Spending</b> <b>through 4-09-13</b>	<b>Budget 13-14</b>	<b>Adjustment</b> <b>from 12-13</b>
Travel	6,000	3024	5000	-1000
Office	100	0	50	-50
Contract Worker	2040	894	2040	0
Finance	210	230	50	-160
Publications	3400	2914	3200	-200
Advancement	100	0	50	-50
Ministry & Nurture	100	0	50	-50
Clerk's Fund	300	27	300	0
FGC	4500	4500	4500	0
Records Project	100	0	100	0
FWCC Travel Fund*	1000	1000	1200	200
Youth Activity Fund*	1000	1000	1000	0
High School Youth Fund*	4900	3800	6000	1100
Spiritual Formation Fund*	100	100	100	0
Friends School in Detroit	4500	4500	4500	0
Olney Friends School	600	600	600	0
Consultation Fund*	0	0	0	0
Scholarship for Ministry*	1500	1500	1000	-500
Insurance			500	500
Miscellaneous	0	102	0	0
<b>Total Expenses</b>	<b>30,450</b>	<b>24,190</b>	<b>30,240</b>	<b>-210</b>
<b>General Fund Income</b>	30,000	29,103	30,240	240
Actual Income minus Expenses		4913		
Total Expense / Members	40.60		41.71	
Members	750		725	
Suggested contribution/member	40.00		42.00	



## Ministry & Nurture

### Committee Report

April 6, 2013

Consolidated Response to the 2012  
Annual Query

*Has our Meeting sought the guidance of the Spirit about the future life of our Meeting?*

*What changes do we need to consider? Do we regard children and youth as being integral to the spiritual life of the Meeting? How may we offer support to families in our Meeting?*

*How might we, as a Meeting, use a process of discernment to find a path into the next couple of decades?*

The Ministry & Nurture Committee was glad to receive responses to the annual query from eight of our 20 monthly meetings. We did not receive responses from any of the worship groups. We were lifted by the love and attention given by these meetings in answering the queries.

Our committee noted some common themes in the responses. Several mentioned the need to attract and retain young people and families with children. There was also expression of concern about the aging of the people in Meeting as they look into the future. Some expressed difficulty looking into the future but also the need to do so, as well as appreciation for the LEYM Annual Query in giving them that opportunity. One response indicated that the queries were not helpful but that it was good to study the queries together. Another response expressed that the queries were timely.

Our committee noted specific responses to the queries, which we have excerpted below.

Many meetings responded with specific aspects of the life of the meeting. Some questioned whether they sought guidance of the Spirit. Others felt their discernment to be Spirit-led. One

meeting wrote of “being aware of the Presence in many small ways—acts of kindness, a sunny day, a child’s smile.” In contrast, another wrote: “We have had some discussions and a retreat which felt gathered. But were they gathered or did it just feel that way because they were meaningful discussions? We are not very confident about our relationship with the Divine. We wonder how to discern the difference between a discussion among Friends and a Spirit-led discussion. Do we even know how to seek the guidance of the Spirit? Are we willing to stop during a discussion and reorient ourselves if it is necessary?”

In responding to the portion of the query that addresses the role of children and youth in the spiritual life of the Meeting, our monthly meetings offered differing answers. From one meeting we heard, “We feel clear that in our Meeting we do not view children as a ‘necessary burden’ but instead cherish them and see them as a part of the Meeting. ... We are also pleased that we have enough willing teachers that we do not need to rely on parents for this role. We believe this not only frees the parent for worship but also creates relationships between children and many of the adults in the Meeting. This conveys our care of children and families.” Another added the thought that, “Recognizing that young people are interested in spirituality, equality, and the environment, we must seek ways to share our leadings in these areas. In this busy world, sharing our experience of centering stillness and how it shapes our social action may resonate with others.”

When thinking about discernment for the future, some meetings are feeling a pressure to grow so there is a future. As one meeting put it, “We as a Meeting need to continue the process of discernment to find a path into the next couple of decades. This needs to be in our conscious attention, but should not be created artificially.” However, as another concluded, “We would like our future to in-

clude ways to make people aware that we are here. We would like our future to include listening for the Spirit in each other, helping each other on our spiritual journeys, and as a community having a deeper understanding of God in our lives.”

**Meeting With Concern for the  
State of Religious  
Education  
Philadelphia, PA.  
January 4-6, 2013**

To Friends Everywhere:

Ten Friends gathered from four yearly meetings and Friends General Conference with a concern for the state of religious education in our yearly and monthly meetings. We met at the Mother Boniface Spirituality Center in Philadelphia, PA, January 4 to 6, 2013 with the support of a grant from the Clarence and Lilly Pickett Endowment for Quaker Leadership. The Friends in attendance were chosen by their yearly meetings as Friends with knowledge of the religious education programs within their yearly meetings.

We came together with passion and love for religious education. We were hungry for time to meet in person to support each other in our calling to develop and nurture Quaker religious education for all ages. We quickly experienced a sense of community, reconnecting with old friends and meeting new ones. We considered the question of what is included in the full scope of religious education, and while there are many topics to be covered, we would ultimately want religious education to provide a fertile environment for Friends to experience God as love.

We looked at the state of religious education in each of the yearly meetings represented among us through an exercise of taking inventory, considering a wide range of components that would be part of a vibrant religious education program. We found that this exercise affirmed our strengths and revealed where we need additional support for religious education programs and teachers.

We are concerned that we currently lack an organizational structure for bringing Friends together across yearly meetings to care for religious education. We noted the diminishing of staff support for religious education within several Friends organizations and discussed the challenge this creates in nurturing vibrant religious education programs.

The areas we identified as priorities for renewal are:

- Communication with religious education teachers in monthly meetings regarding the resources that exist and the best uses of these resources. We are concerned that Friends are not aware of, and not using, the available materials.
- Training for teachers, and tools for Friends to use in providing this training.
- A system for mentoring religious education teachers, programs and committees.
- Venues for meeting face to face to support each other in this work and nurture new Friends in becoming involved at a deeper level.

We began to wrestle with potential solutions to these challenges and to seek concrete ways to solve them through collaboration across yearly meetings.

We ask for your prayers as we continue to seek God’s guidance for this work. We pray that you may be blessed with an abundant and joyful spirit for religious education.

Yours in the Spirit,

Joan Broadfield, Philadelphia Yearly Meeting

MJ Foley, Baltimore Yearly Meeting

Kathleen Karhnak-Glasby, Philadelphia YM

Becky Morehouse, Lake Erie Yearly Meeting

Carla Pratt-Harrington, Lake Erie Yearly Meeting

Trudy Rogers, Friends General Conference

Gail Thomas, Baltimore Yearly Meeting

Trudy Rogers, Friends General Conference  
Gail Thomas, Baltimore Yearly Meeting  
Michael Wajda, Friends General Conference  
Melinda Wenner Bradley, Philadelphia YM  
Liz Yeats, South Central Yearly Meeting



Still wondering about your summer plans?

Treat yourself to a week of Quaker immersion at the FGC gathering in Greeley, Colorado, June 30th—July 6th. Week long workshops are still open, including:

- Howard Brinton and the Reinvention of Quakerism
- Leadings and Holy Obedience
- Finding Joy in Aging and in Our Mortality

Special programming is available for children, high schoolers and young adults.

You will find opportunities to get to know other Friends who share your interests and concerns.

For example:

- Quaker Earthcare Witness sponsors an extensive series of afternoon events.
- There is a pre-gathering retreat for people of color and their families.
- Nontheist Friends schedule events each afternoon

**Register today.**

## Submission Deadline for Fall Bulletin 9/15/2013

### LEYM Change of Address

Name \_\_\_\_\_  
Address \_\_\_\_\_  
City \_\_\_\_\_  
State \_\_\_\_\_  
Zip \_\_\_\_\_  
Email \_\_\_\_\_  
Meeting \_\_\_\_\_

### Please return to:

Thomas Burnett  
3816 Spring Valley  
Albany, Ohio 45710

### LEYM Committee Clerks

**Advancement & Outreach:** Dorores Avner (Pittsburgh)

**Arrangements & Site:** Jon Sommer (Broadmead)

**Earthcare:** Judy Greenberg (Broadmead)

**Finance:** Jeff Cooper (Ann Arbor)

**High School Teen Retreat Program:** Merry Stanford  
(Red Cedar)

**Ministry & Nurture:** Paula Deming (N. Columbus)

**Nominating:** Thomas Taylor (Ann Arbor)

**Peace:** Nancy Taylor (Ann Arbor)

**Program:** Clemence Ravacon Mershon  
(Erie Worship Group/Pittsburgh)

**Publications & Archives:** Rosemary Coffey (Pittsburgh)

**Youth & Children:** Carla Pratt-Harrington (Athens)

**Address Service Requested**

**LAKE ERIE YEARLY MEETING**

**Thomas Burnett  
3816 Spring Valley  
Albany, Ohio 45710**

Spring 2013 Bulletin

**We're on the Web!  
<http://leym.org>**